

# Smart Wifi + BLE STAR PROJECTOR WITH MUSIC SYNC FUNCTION



Music Mode



Remote Control

## WORKS WITH



Energysmart App



Apple Siri



Google Home



Apple Watch



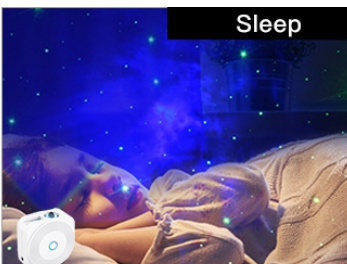
Google Assistant



Amazon Alexa



Parlor



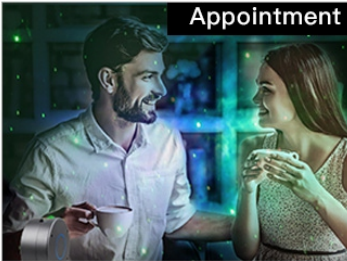
Sleep



Gifts



Festival



Appointment



Gifts

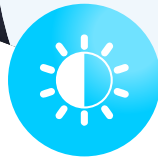
**Multiple Scene  
Presets perfect  
for all kinds  
of scenes.**



## CONTROL AT YOUR FINGERTIPS ENER-J APP CONTROL



2.4 Ghz  
Wi-Fi Control



Brightness



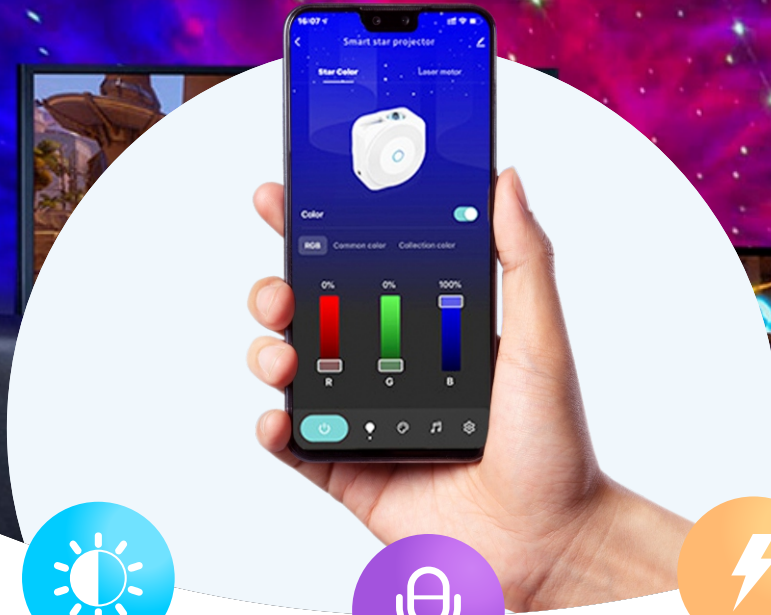
Voice Control



5V 1A  
Power Input



Timing  
Function



### Features

**ALEXA & GOOGLE HOME SMART FUNCTIONALITY** - The projector is controlled using the app, which allows you to choose your desired effects from the pre-set list. The app is compatible with TUYA platform and ENERJSMART app, and is also compatible with Google Home and Amazon Alexa for voice control. Using the app, you can also set timers for your projector to turn on and off to save power. Plus the app works on both, Bluetooth and WiFi, so you can control your device remotely from almost anywhere!

**DUAL PROJECTION TECHNOLOGY** - The projector features TWO different projector types; combining a projection lamp with class 2 laser. The lamps can be used independently or combined to produce an absolutely stunning visual experience!

**STUNNING NEBULA CLOUD** - The lamp projector produces a stunning soothing transforming nebula cloud effect on your wall or ceiling; providing a virtual glimpse at these stunning phenomena.

**BRIGHT STARS** - The laser produces a sharp field of drifting stars; simulating the night sky. The green stars look amazing on their own or combined with the nebula effect. Please note, this product uses a class 2 laser - do not look directly into the projector lamps.

**CREATE A RELAXING ENVIRONMENT IN ANY ROOM** - Bring the galaxy indoors! Drift off to sleep in peaceful tranquillity; relax and unwind in the living room, or enjoy dining under the stars - the ENER-J Star Projector instantly brings soothing aurora effects to virtually any room in the house. It's a must-have for adults and kids alike!



### Specifications

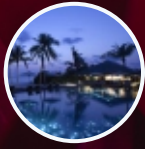
Power Input	:	5V 1A
Power Output	:	<1 mW per beamlet
Classification of lasers	:	Class 1
Work Temperature	:	14°F-95°F/10°C-40°C
Wireless Type	:	WiFi 2.4G 11T1R
Laser color	:	Green,515-520nm /Blue,450nm
Nebula color	:	Colorful,450nm Flame Retarding
Shell Material	:	VO Class ABS
Application	:	Indoor(Home/Café /Bar/motor homes)
Certificate	:	FDA,FCC,CE,ROHS
Control	:	Amazon Alexa, Google Home, APP
Timing	:	Flexible timing
Dimensions	:	15L*7.7W*15H
Net Weight	:	0.45KG
Power cord length	:	1.8m

# SCENIC LIGHTING

Preprogrammed scenic lighting effects can be designed, press the images to switch the lighting effect.



Party



Leisure



Soft



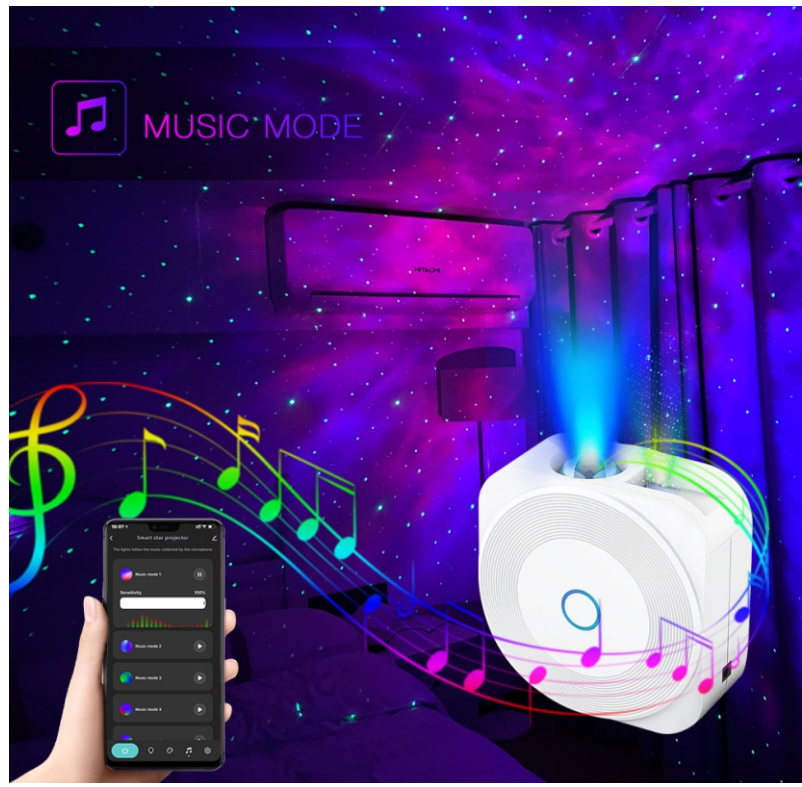
Rainbow



Shine



Gorgeous



# How to Install Our App

---



## 1. DOWNLOAD AND INSTALL OUR APP

Install 'ENERJSMART' in your Smartphone or Tablet devices through Google Play or iOS Play Store. Alternatively, please scan below QR code's.

2. Navigate to the app store on your mobile device.
3. Download an app called Enerjsmart.
4. Once app is downloaded, open the app and select **Register**.
5. The app should automatically detect your country code. If not, please select the country code for your country of residence.
6. Enter either your email address or phone number. (If you enter your phone number you will be sent a verification text message which you will need in the Next Step).
7. If you're setting up using a phone number, please enter the verification code that was sent to your phone and your desired password, then select **Confirm**.
8. If you're setting up using an email address please enter your desired password, and select **Confirm**.
9. You have now successfully created an account and you're now ready to start setting up your Smart Floodlight and fixtures.
10. Select the Plus (+) in the top right corner to add a device.
11. Select **Ligthing devices - Light Source (BLE + Wifi)**
12. Connect your Smart Star Projector to a power source. To enter pairing mode, turn the Smart Floodlight on and then off for 3-5 seconds at a time. Do this 3 times. The Smart Floodlight will begin blinking rapidly once in pairing mode.
13. Connect to your desired Wi-Fi network, enter your password, then select **Confirm**.
14. If a blue box appears at the top of the screen it means you're currently not connected to a Wi-Fi network.

15. Once you select **Confirm** after entering your password, the app will start to pair the Smart Floodlight to your app.
16. If you get a message that says "Failed to Add" it means that the connection has failed. You may have to enter the Smart Floodlight into pairing mode again, and repeat steps 11 through 14. Please ensure Wifi Frequency is set to 2.4G (5G not compatible).
17. Once your Smart Star Projector successfully connects to the app, the beside screen will pop up and you can change the name of your Smart Star Projector/Device.  
  
After naming your Smart Floodlight, select Done.
18. You're now able to control your Smart Star Projector in the Enerjsmart app.
19. Select **Profile**.

In your profile you can use:

### Adjust Colour

- RGB+6500K to 3000K: You can adjust RGB colour (1600 Million colour) + 6500K (Cold white) or 3000K (Warm/
- RGB+3000K-6500K: You can adjust RGB colour (1600 Million colour) + 3000K (Warm/yellow light) to 6500K
- CCT: 3000K-6500K (Cold white to warm white).
- C/W: 6000K or 3000K (Cold white or warm white).

**\*RGB not available in all Smart Lighting products. Kindly check the Product Specifications for details.**

### Dimming

- The lamp is dimmable, you can dim 1%-100%.

### 8 Modes

- Night, Read, Meeting, Leisure, Soft Light, Colourful...

## 20. Share with your family and friends

If you would like few people to control the same lights, then share with them.

## 21. Remote Control

12 million kilometers remote control. When we are still stuck with the switch to control the lights, Smart Floodlight have made it easy for you to master the lighting at home on the other side of the globe.

## 22. Create A Group to Control

Control each Wi-Fi Smart Floodlight individually, or together as a group.

## 23. Automation

Execute automatically according to conditions such as the weather, device status, and time (When the weather changes (Temperature, Humidity, Weather, PM2.5, Air quality, Sunset/sunrise, Wind speed), schedule, when the device status change).

# CONTROL YOUR LIGHTS WITH YOUR VOICE



## Alexa Setup

If you're new to Echo, it's a super smart speaker from Amazon that responds to your voice. Once you've bought Amazon Echo and downloaded the ENERJSMART App, you'll need to enable...



- 1. Enable the ENERJSMART App**  
In your Alexa app, tap Skills in the menu and search for ENERJSMART. Tap Enable.
- 2. Link Account**  
Enter your ENERJSMART App username and password and follow the onscreen instruction.
- 3. Talk to Alexa**  
Now the fun part Ask Alexa to control your ENERJSMART device. Check a full list of things you can control by clicking here.

# Google Home Setup

Now you can use Google's voice-activated speaker to control your Smart Home Sockets and adaptors. With the Google Assistant, you can turn on lights without pressing a button.

## 1. Setup

Start by getting the Google Home app and setting up your Google Home if you have not done this already.

## 2. Add ENERJSMART Action

In the Google Home app, tap the menu icon and select Home Control. Then tap the + button to see a list of Action tapping ENERJSMART to select the Action.

## 3. Link you ENERJSMART Account

Now follow the in-app instructions to link you ENERJSMART App account. Once complete you'll be able to say "Okey Google, turn my lamp on" or "Okay Google, set hallway to ON/OFF".



---

## Thank you for choosing ENER-J!

Customer satisfaction is our TOP priority. Please let us know how you felt about your experience.

Happy? We are so delighted that you are pleased with our product. Feel free to express your newfound joy! Share your experience by writing a review.

Not Happy? If you are not fully satisfied with the item you received, have any problems like damages or questions, please contact us. We typically respond within 24-48 hours.

### Caution

Products should be installed as per the instructions mentioned in this manual and also as per current electrical codes National Electric Code (NEC). To avoid the risk of fire, electrical shock or injury, it is advisable that the installation is done by a trained Electrician. Also it is important that mains power supply is switched off before the product is installed or repaired. It is advisable to keep the manual for future reference.

### Please Note

Wi-Fi frequency is 2.4GHz and not 5GHz (5GHz not supported). You can do this by contacting your broadband service provider and requesting to either switch to 2.4GHz entirely or split it between 2.4GHz and 5GHz.

If despite following the process as instructed above, you still fail to add the device, then possibly there is a firewall on your Wi-Fi router blocking this device to be connected to your Wi-Fi Router. In such a case you would need to disable the firewall, add this device following above process and once the device is added, enable the firewalls back again.

## Stuck? Confused?

Contact our Technical Support team on:

T: +44 (0)2921 252 473 | E: support@ener-j.co.uk

Lines are open Mon - Fri (8am to 4pm)